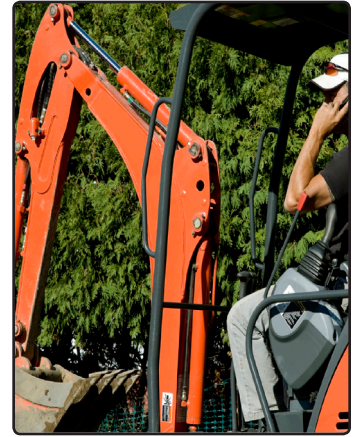


# Know What's Below

Call 811 Before You Dig



Did you know that a simple job like planting a tree in your yard can jeopardize your safety? Many energized power and utility lines are buried just a few feet under the ground. Digging, trenching or excavating without knowing where utility lines are buried could be costly ... and fatal. Before you dig, protect yourself and call 811 to have the area marked for utility lines.

## One Call Does it All

811 is the nationwide number to call before you begin any digging project. By calling 811, you will be routed to the underground locating service in your state, who will notify the appropriate utilities in your area. In some areas 811 may not work, and in these cases, please continue to use **800-482-8998** (Arkansas), **800-272-3020** (Louisiana) and **800-344-8377** (Texas).

Please remember, SWEPCO marks only lines owned by the company. SWEPCO customers own the underground electric service lines on their property. Customers should contact a licensed electrical contractor to locate these customer-owned lines prior to digging.

## Allow the Appropriate Time

Planning is essential for safe digging, especially because you must call AT LEAST 48 hours before you plan to dig. After calling 811, utilities have at least 48 hours to come out and mark their lines with a color-coded paint or flagging system.

- Red** indicates electric power lines, conduit and cables.
- Yellow** represents gas, oil, petroleum or gaseous materials.
- Orange** is used for communication, alarm or signal lines.
- Blue** is the color used to indicate potable water.
- Purple** is reclaimed water, irrigation and slurry lines.
- Green** is the color for sewers and drain lines.
- Pink** is used to indicate temporary survey markings.
- White** is used before the locating services to mark the proposed excavating site.

## Respect the Marks

Marking underground utility lines is the way operators show the approximate location of their facilities. Remember, marks may be in paint, flags or both. There also may be marks that designate an "all clear," meaning there are no buried facilities.

If you notice faded or missing marks, you should call 811 with your reference number and request a remark. Requesting a remark DOES require an additional 48-hour notice for the utility.

The marks may be confusing, but don't guess at the meaning. If you have any questions, you should contact the utility directly.

## Excavate Carefully

You must excavate carefully, especially in the tolerance zone. The tolerance zone is a horizontal area, measured from the marks, where the underground facility is located.

In Arkansas, Louisiana and Texas, the tolerance zone must be an area equal to the width of the underground facility, plus 18 inches on each side. If no width is given by the utility for its facility, assume two inches.

## Safety DVD Available

Visit [www.swepco.com/go/811](http://www.swepco.com/go/811) to view or order a video clip on the call before you dig process.